

Setting Up Your Units BeAScout Pin

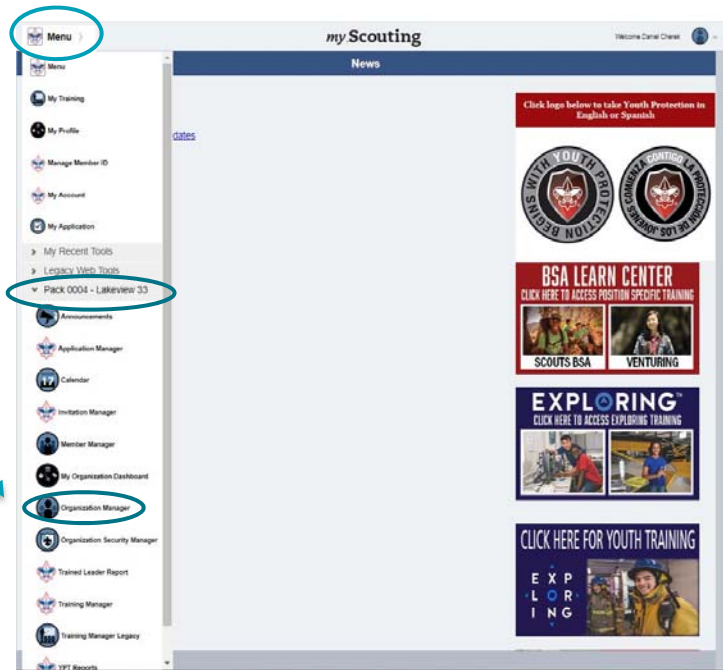
BeAScout is an online site that prospective members can use to find a unit near them. To prepare for your **My.Scouting Tools Online Registration** go-live, please verify that your BeAScout pin is turned on and that the contact information is current and displays the information you want shown for your unit.

Step 1: Log in to your My.Scouting account. - my.scouting.org



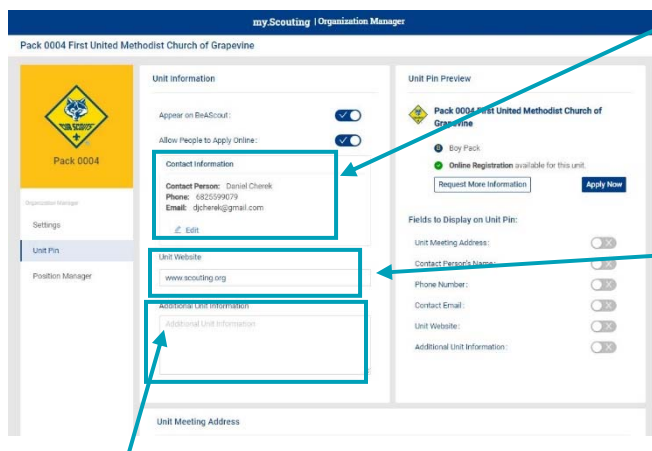
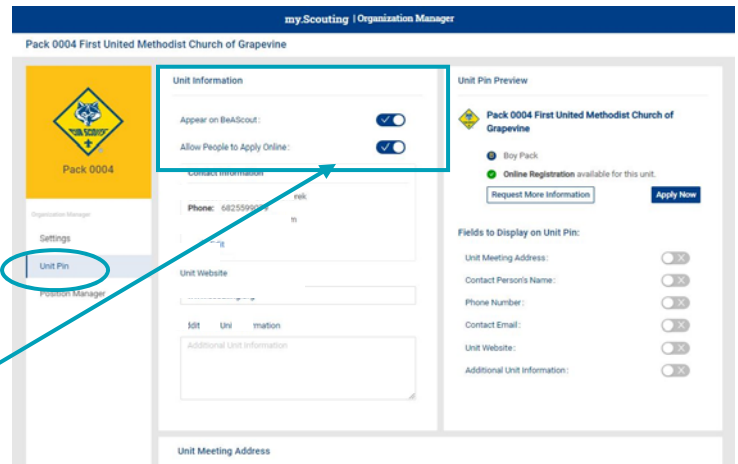
Step 2: Go to Organization Manager

- Select **Menu**
- Select your unit
- Select **Organization Manager**



Step 3: Update your Unit Information

- Select **Unit Pin** on the left-hand side of the screen you will now see the fields available for setting up your BeAScout Pin.
- In the **Unit Information** section of the screen, set the **Appear on BeAScout** to the on position. If the check mark is visible then the setting is in the on position. Turning this on allows the unit pin to show on the map.
- Set **Allow People to Apply Online** so it is in the on position with the check mark showing.



- Add your units **Primary Contact information** – this will be the person whose information will be visible when someone clicks on your unit’s pin. It is recommended that you include an email address. The telephone number is optional and will only show if you select to display it. Use the edit button to change the contact information.
- Enter your unit’s web address in the Unit Web Site box.

- Add **additional information** – frequently asked questions can be addressed here such as what day and time the unit usually meets. This field is optional but can help parents determine if your unit meets their needs before they apply.
 - For Packs you may list your den meeting info, such as days and times –remember new parents who have never been in Scouting may be unfamiliar with our program. So, including things like “Tigers meet on Monday” will not be helpful, instead say “1st graders meet Monday”
 - For Troops, Teams, Crews, or Ships – you may want to list any specialty areas of interest your unit does such as a Troop that focuses on hiking, or a Crew that focuses on scuba, or a Ship that focuses on sailing small crafts, things that will help people decide if it is the right unit for them.

- G. **Check your unit meeting address** and correct if needed. It will default to your Chartered Organization address. If this is not where your unit meets edit the address so that your meeting location will show on the pin.

If you change the unit meeting address, be sure to click the Locate button so that the latitude and longitude for the address you entered are mapped.

myScouting | Organization Manager
Pack 0004 First United Methodist Church of Grapevine

Unit Information

Appear on BeAScout!

Allow People to Apply Online!

Contact Information

Contact Person: Carla Check
Phone: 8172891079
Email: carla@cmu.com

Unit Meeting Address

Address Line 1: 422 Church St

Address Line 2:

City: Grapevine

State/Region: TX

ZIP Code: 76081

Locate

Step 4: Select the fields to display on the unit pin.

The fields you can choose from are displayed in the Unit Pin Preview. The unit type you configured in Settings will automatically show and the apply now online will show if you enabled it in the previous steps.

The fields you select will display in the Unit Pin Preview as you enable them so that you can see what will be displayed on your BeAScout pin.

Only those fields that have the check mark next to them will display in BeAScout

myScouting | Organization Manager
Pack 0004 First United Methodist Church of Grapevine

Unit Pin Preview

Pack 0004 First United Methodist Church of Grapevine

By Pack

Online Registration available for this unit.

Request More Information

Apply Now

Fields to Display on Unit Pin:

Unit Meeting Address:

Contact Person's Name:

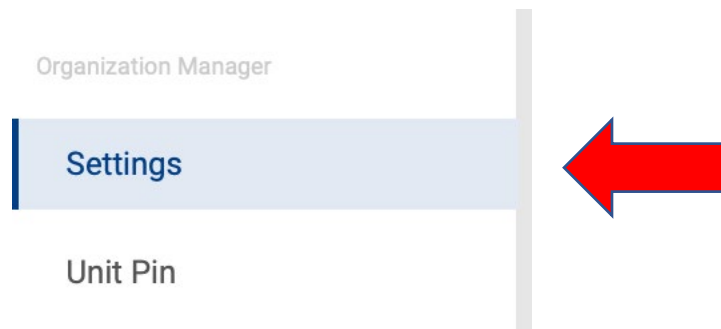
Phone Number:

Contact Email:

Unit Website:

Additional Unit Information:

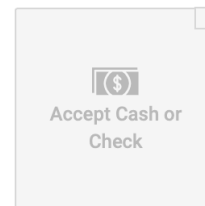
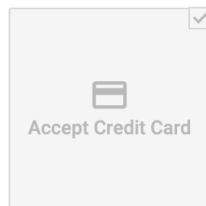
Step 5: Update information located under Settings right above Unit Pin



Settings

Payment Method

* Payment options were set by the council. They may not be changed for this unit.



Membership Application Approval

Select who has the ability to accept (approve) applications for your unit. Note: this applies only to adult applications

- Chartered Org Representative Approval Required
- Committee Chair and Chartered Org Representative Approval Required

Adult Applications

- Allow Adult Applications

Types of Youth Applicants This Pack Accepts

- Girl Only
- Boys Only
- Both Boys and Girls

The Settings tab will have information on Key 3, Membership Application Approval, and Email Settings. Doublecheck that Types of Youth Application This Pack Accepts is correct. Make sure to hit "Save" at the bottom of the screen.